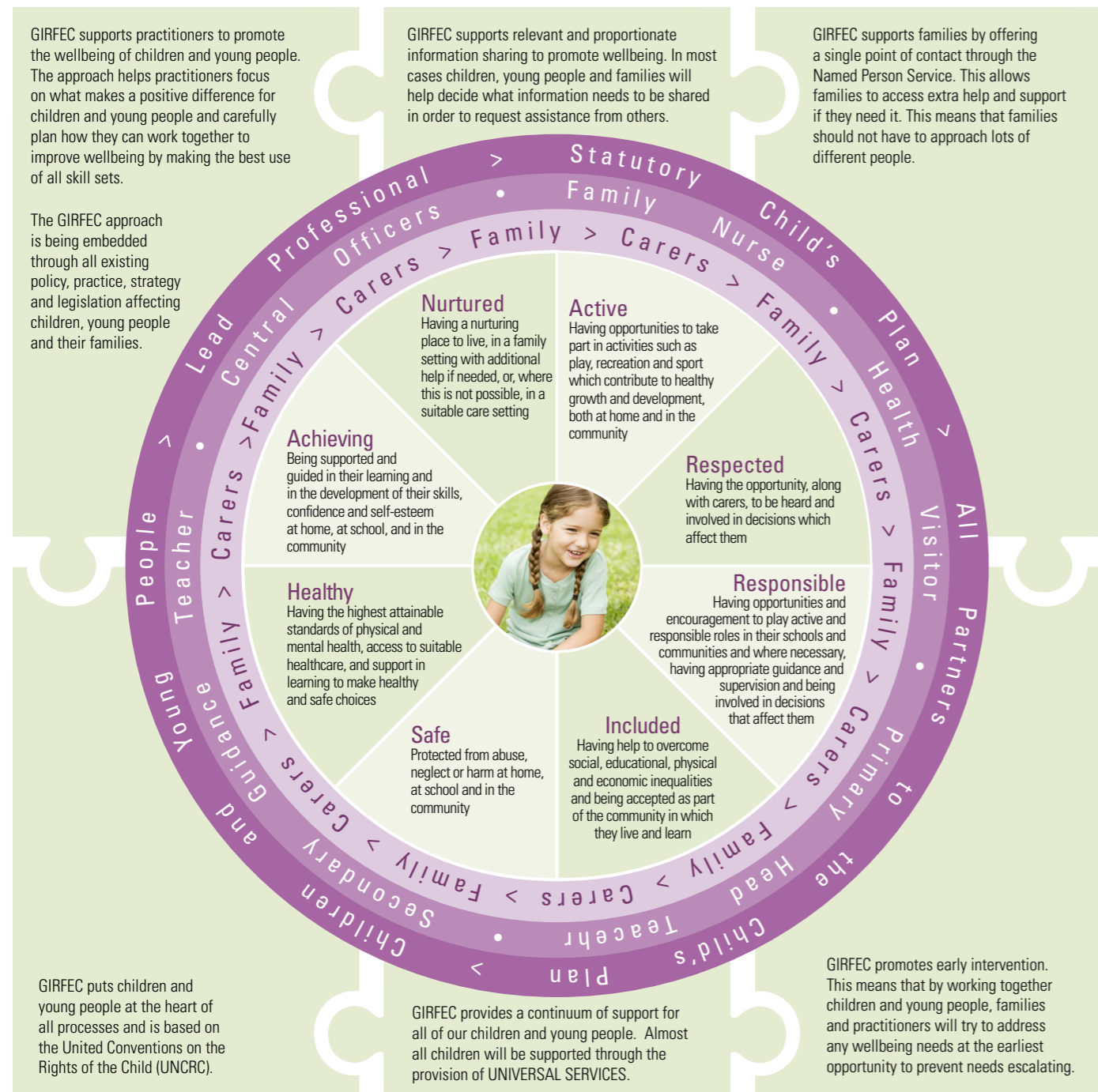
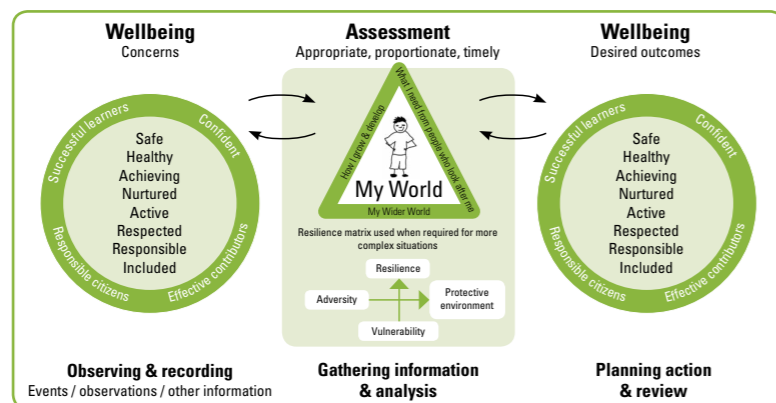


The Aberdeen Practice Model

Getting it Right for Every Child (GIRFEC) is a national approach to improving the wellbeing of children and young people. GIRFEC is based on children and young people's rights and guides practitioners, children, young people, parents and carers to work in partnership.



All partners, including children / young people and parents / carers consider wellbeing by making proportionate use of the National Practice Model. The model enables the partners to analyse needs and identify the best way of supporting wellbeing.



Partners decide on level of planning required.

Service Delivery through a continuum of provision

The Lead Professional

When two or more professionals need to work together to meet a child's wellbeing needs, the practitioner who has most knowledge or responsibility in relations to the main wellbeing need will become the Lead Professional.

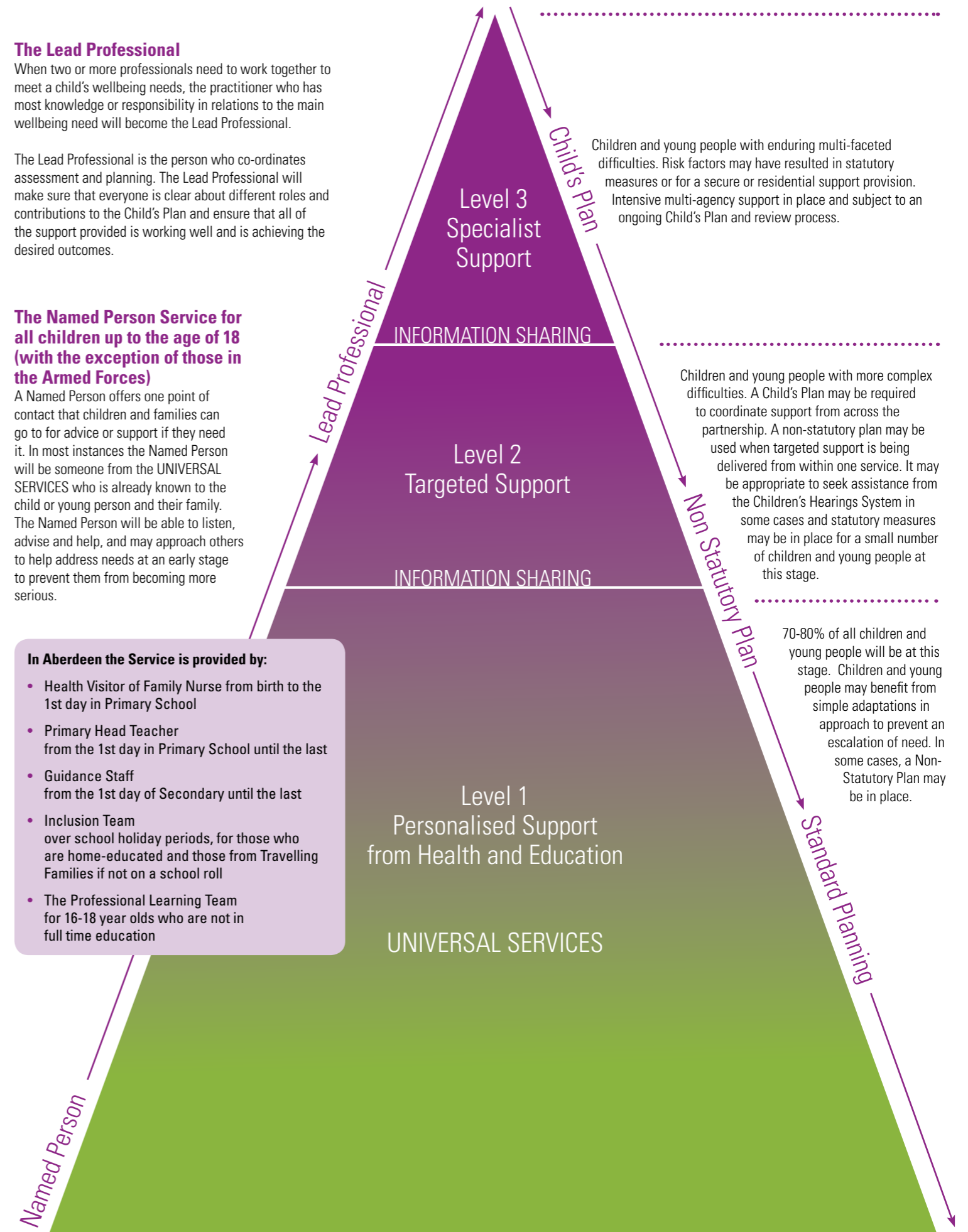
The Lead Professional is the person who co-ordinates assessment and planning. The Lead Professional will make sure that everyone is clear about different roles and contributions to the Child's Plan and ensure that all of the support provided is working well and is achieving the desired outcomes.

The Named Person Service for all children up to the age of 18 (with the exception of those in the Armed Forces)

A Named Person offers one point of contact that children and families can go to for advice or support if they need it. In most instances the Named Person will be someone from the UNIVERSAL SERVICES who is already known to the child or young person and their family. The Named Person will be able to listen, advise and help, and may approach others to help address needs at an early stage to prevent them from becoming more serious.

In Aberdeen the Service is provided by:

- Health Visitor of Family Nurse from birth to the 1st day in Primary School
- Primary Head Teacher from the 1st day in Primary School until the last
- Guidance Staff from the 1st day of Secondary until the last
- Inclusion Team over school holiday periods, for those who are home-educated and those from Travelling Families if not on a school roll
- The Professional Learning Team for 16-18 year olds who are not in full time education



Most children will travel from birth to the world of work requiring only the support of their families and the UNIVERSAL SERVICES.